

ADMISSIONS CONSULTATION FOR HASTINGS HIGH SCHOOL

Hastings High School, Leicestershire is seeking your views on the changes proposed below. Our consultation will run for 6 weeks from 20th December 2019 to 31 January 2020. The determined admissions arrangements must be published on our website by 1st March.

This policy will operate from September 2021. It will apply to all admissions for the school year 2021-2022 and for subsequent years until further notice.

Admissions Arrangements:

Proposal 1;

Hastings High School propose to change their catchment area from the current catchment area to the proposed new catchment area. Both existing and proposed catchment area maps are available in appendix 1 and 2 to this document or on the school website (<http://www.hastings.school/wp-content/uploads/Admissions-Consultation-for-Hastings-High-School.pdf>)

All other admissions will remain as per the policy on the school website.

Proposal 2;

Hastings High School propose to amend and re-order the priority criteria for entry for applications from September 2021. This is due to the school being very oversubscribed and pupils living close to the school and within the catchment area not being able to gain a place at the school. The proposed new rankings are below;

1st	Children who are looked after and those children who were previously looked after children. (See note ii).
2nd	Pupils who live in the catchment area, (See note iii) and have attended a feeder primary school (see note vi).
3rd	Pupils who will have an older brother or sister attending the same school at the same time, (See note iv).
4th	Pupils who have a serious medical condition or exceptional social or domestic needs that make it essential they attend the school requested. (Professional documentation confirming the situation must be submitted with the application). (See note v).
5th	Live in catchment area, (See note iii).
6th	Have attended a feeder primary school, (See note vi).
7th	Children of staff who have been employed on a permanent contract at the school for two years or more at the time at which the application for admission is made.
8th	Distance from Hastings High School

Proposal 3:

Hastings High School propose to introduce a new 'in-year' Admissions policy for entry for applications from September 2021. This is due to the school being very oversubscribed and above our allocated PAN (Pupil admission number) in all year groups. The policy can be found on the school website (<http://www.hastings.school/wp-content/uploads/Admissions-Consultation-for-Hastings-High-School.pdf>)

Response Form:

Proposal 1:

Hastings High School propose to change their catchment area from the current catchment area to the proposed new catchment area. Both existing and proposed catchment area maps are available in appendix 1 and 2 to this document or on the school website (<http://www.hastings.school/wp-content/uploads/Admissions-Consultation-for-Hastings-High-School.pdf>)

Yes No

Proposal 2:

Hastings High School propose to amend and re-order the priority criteria for entry for applications from September 2021. This is due to the school being very oversubscribed and pupils living close to the school and within the catchment area not being able to gain a place at the school. The proposed new rankings are below;

Yes No

Proposal 3

Hastings High School propose to introduce a new 'in-year' Admissions policy for entry for applications from September 2021. This is due to the school being very oversubscribed and above our allocated PAN (Pupil admission number) in all year groups. The policy can be found on the school website (<http://www.hastings.school/wp-content/uploads/Admissions-Consultation-for-Hastings-High-School.pdf>)

Yes No

Other Comments:

Yes No

Please return all response by 31 / 01 / 2020 to:

Hastings High School
Consultation Documents
c/o Co-Headteachers
St Catherines Close
Burbage
LE10 2QE

Your Name:

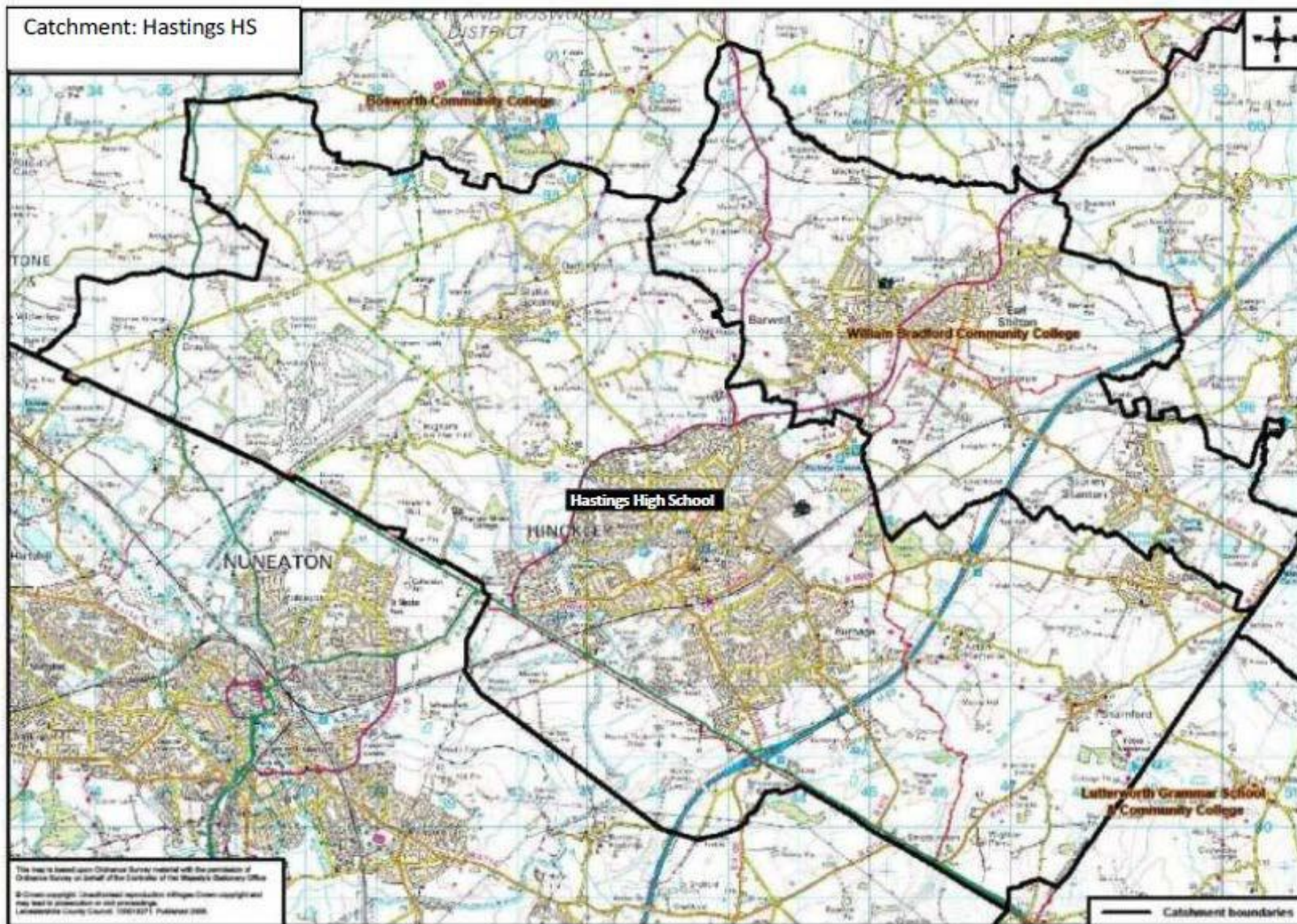
Sign:

Date:

Agency (i.e. school, parent etc...)

Additional Requirements:

Appendix 1: Current Catchment Area



Appendix 2: Proposed Catchment Area

